

代謝疾病試劑盒目錄

Metabolism Diseases Assay Kit Catalogue

BioVision
BioVision Incorporated



昶安科技

台北:(02)8751-5851

台中:(02)2422-0117

台南:(06)311-0133

新竹:(03)621-0429

客服:0800-0123-10

信箱:service@exbio.com.tw



BV-2109-01

HDL and LDL/VLDL Quantification Colorimetric/Fluorometric Kit (K613)

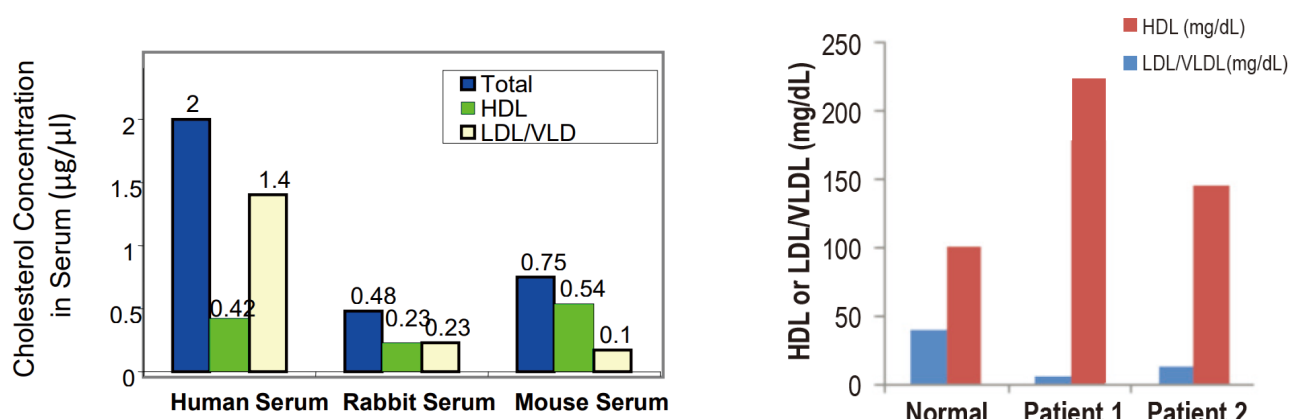



Figure: (a) Measurement of total cholesterol, HDL, LDL/VLDL from serum samples. cholesterol were measured following the kit protocol. (b) Quantification of HDL and LDL/VLDL from normal human serum and from patient 1 and patient 2 with atherosclerosis. Assays were performed according to the kits protocol.

產品	適用檢體	實驗種類	貨號
Acetoacetate	Urine	C	K650
β -Hydroxybutyrate	Serum, urine	C	K632
PicoProbe™ β -Hydroxybutyrate	Serum, urine	F	K651
Total Bile Acids	Serum, urine	C	K209
Cardiolipin	Lysate, mitochondria	F	K944
Cholesterol	Cells	F	K587
Cholesterol Efflux	Cells	F	K582
Cholesterol	Serum	C	K957
Cholesterol	Serum, tissue	C/F	K603
Cholesterol	Serum, tissue	C	K623
Fatty Acids	Serum, tissue	C/F	K612
Fatty Acids	Serum	C	K954
Glycerol	Serum, tissue	C/F	K630
Glycerol	Serum, tissue	F	K643
Glycerol	Cells	F	K977
HDL/LDL 	Serum	C/F	K613
HDL Uptake (CB)	Serum	F	K586
Sphingomyelin	Serum, tissue	C	K600
Triglycerides	Serum	C/F	K622
Triglycerides	Serum, tissue, saliva	F	K614
Free Fatty Acid	Tissue lysate, cell lysate	C/F	K612
EZScreen™ Free Fatty Acid	Serum, protein, tissue lysate, cell lysate	C	K956

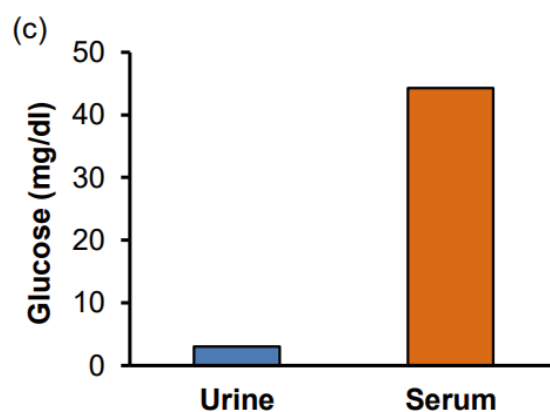
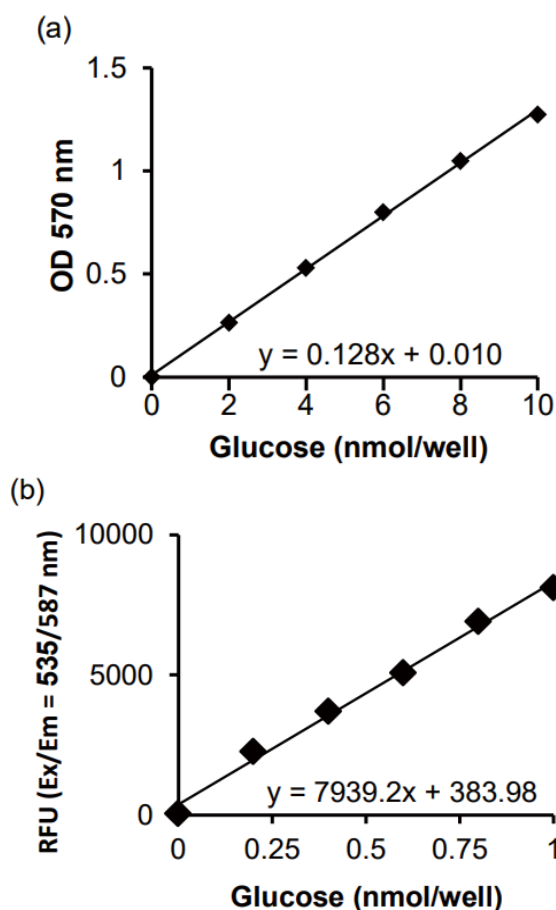


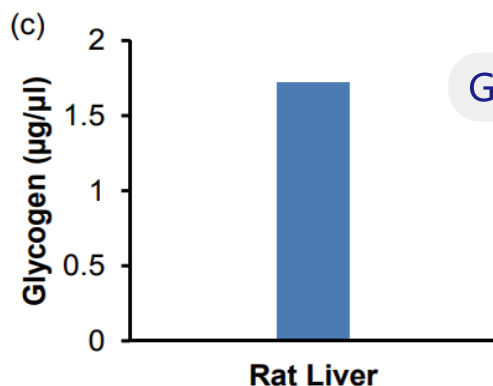


Figure: Glucose Standard Curve; (a) Colorimetric (b) Fluorometric, (c) Quantitation of Glucose in human urine & serum. Urine & serum samples were deproteinized using a 10 kDa Spin Column (10000 x g, 10 min, 4 °C). Urine filtrate (20 µl) & serum filtrate (1 µl) were spiked with a known amount of glucose as internal standard (4 nmol). Assays were performed according to the kit protocol. Calculated concentrations: Urine: 3.00 ± 0.4 mg/dl; Serum: 44.2 ± 6.7 mg/dl.

Glucose Colorimetric/Fluorometric Assay Kit (K606)


產品	適用檢體	實驗種類	貨號
2-Phosphoglycerate	Cells, tissues	C/F	K778
Dihydroxyacetone Phosphate	Cells, tissues	F	K673
Glucose 	Serum, cells, tissues, urine	C/F	K606
Glucose	Serum, cells, tissues, food	C	K686
Glucose	Serum, cells, tissues, food	F	K688
Glucose-6-phosphate	Serum, cells, tissues	C	K657
Glucose-6-phosphate	Serum, cells, tissues	F	K687
Phosphoenol Pyruvate	Cells, tissues	C/F	K365
Pyruvate	Cells, tissues	C/F	K609
Aldolase	Cells, tissues	C	K665
Enolase	Cells, tissues	C/F	K691
GADPH	Cells, tissues	C	K680
Hexokinase	Serum, cells, tissues	F	K769
Phosphofructokinase	Cells, tissues	C	K776
Phosphoglucose isomerase	Serum, cells, tissues	C	K775
Pyruvate kinase	Cells, tissues	C/F	K709
Triose Phosphate Isomerase	Cells, tissues	C	K670
ADP	Tissue, cells	C	K356
ADP	Tissue, cells	C/F	K355
ATP	Tissue, cells	C/F	K354

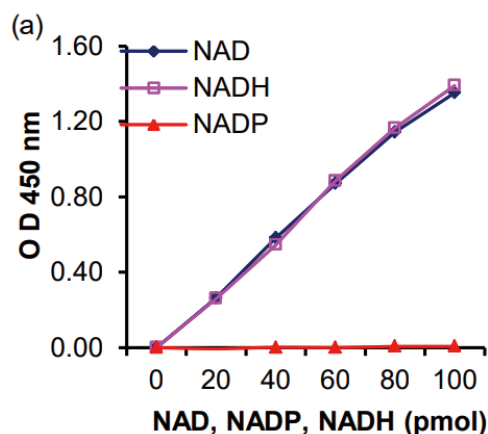
產品	適用檢體	實驗種類	貨號
Free Glycerol	Serum, plasma, tissue lysate, C cell lysate		K634
Free Glycerol	Serum, plasma, tissue lysate, C/F cell lysate		K630
PicoProbe™ Free Glycerol	Serum, plasma, tissue lysate, F cell lysate		K643
Glycerol	Cell-based	F	K977
Glycerol-3-Phosphate Dehydrogenase Activity	Tissue lysate, cell lysate	C	K641
Glycerol-3-Phosphate	Tissue lysate, cell lysate	C	K640
Glycine	Serum, plasma, urine	F	K589
Glycogen	Tissue lysate, cell lysate	C	K648
EZScreen™ Glycogen	Tissue lysate, cell lysate	C	K960
Glycogen 	Tissue lysate, cell lysate	C/F	K646
Glyoxalase I	Serum, plasma, tissue lysate, C cell lysate		K591
Glyoxalase II	Serum, plasma, tissue lysate, C cell lysate		K460







Glycogen Colorimetric/Fluorometric Assay Kit (K646)

Figure C. Sample of rat liver was homogenized with deionized water (0.05 mg liver/µl water). Homogenate was boiled for 10 min., centrifuged for 10 min. at 18000 x g and supernatant was collected. Samples (5 µl of 10 times diluted) were spiked with glycogen (0.8 µg) and assayed according to the protocol. Assays were performed following the kit protocol.

產品	適用檢體	實驗種類	貨號
FAD	Tissue, cells	C/F	K357
NAD	Tissue, cells, serum, urine	C	K337
NADP/NADP Ratio 	Tissue, cells	C	K347



產品	適用檢體	實驗種類	貨號
Glutamate 	Cell lysate, tissue lysate, serum	C	K629
Glutamate Dehydrogenase	Cell lysate, tissue lysate, serum	C	K729
EZCell™ Glutathione Detection Kit	Cell-based	F	K504
Glutathione (GSH/GSSG/Total)	Cell lysate, tissue lysate	F	K264
Glutathione	Serum, plasma	C	K939
Glutathione 	Cell lysate, tissue lysate	F	K251
Glutathione 	Cell lysate, tissue lysate	C	K261
Reduced Glutathione (GSH)	Cell lysate, tissue lysate	C	K464
Reduced Glutathione (GSH)	Cell lysate, tissue lysate	F	K740
Glutathione Peroxidase 	Cell lysate, tissue lysate	C	K762
Glutathione Peroxidase	Cell lysate, tissue lysate	F	K761

Glutathione Peroxidase Activity Colorimetric Assay Kit (K762)

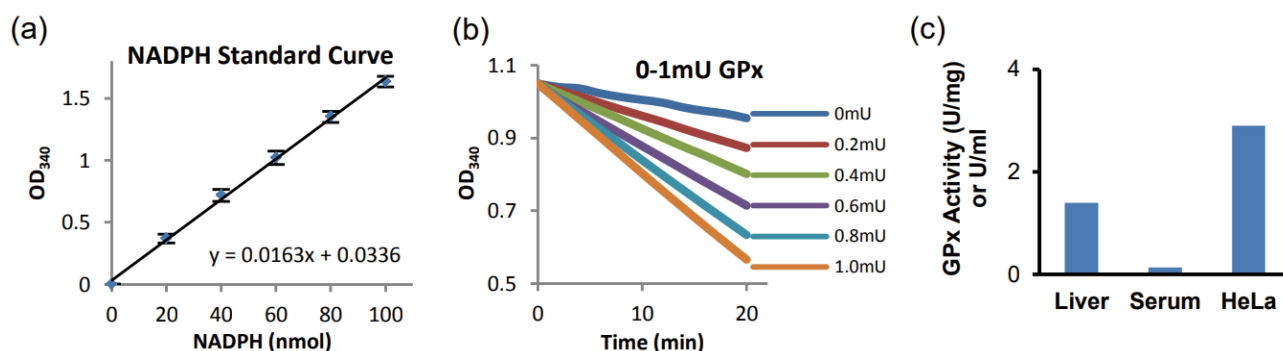
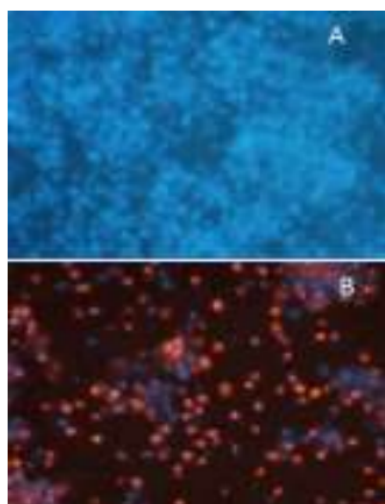





Figure: (a) NADPH Standard Curve. (b) Measurement of GPx activity using purified enzyme. (c) GPx Activity was measured using rat liver lysate (23 µg), human serum (1 µl) and HeLa cell lysate (16 µg). Assays were performed following the kit protocol.



EZCell™ Glutathione Detection Kit (Blue Fluorescence) (K504)

Figure: Effect of Staurosporine on GSH levels reflected by reduction in fluorescence intensity in HeLa cells. HeLa cells were seeded overnight at 5×10^5 of viable cells/well. The next day the cell culture was treated with 0.5 µg/ml of Staurosporine and returned to the incubator for the next 24 h. Levels of GSH in the living cells corresponding to the intensity of the signal were determined as described in the Assay Protocol. Fluorescence was measured directly in white opaque plates with clear bottoms used for cell culturing.

其他常見代謝產物

產品	適用檢體	實驗種類	貨號
Urea 	Serum, plasma, urine, cell lysate, tissue lysate	C	K375
Urea	Serum, plasma, urine, cell lysate, tissue lysate	C	K376
Urease	Protein preparation	C	K378
Uric Acid	Serum	C/F	K608
Uricase	Tissue lysate, protein preparation	F	K734
Enteropeptidase/Enterokinase 	Protein preparation	F	K758
Dopamine 	Serum, plasma, tissue lysate	C	K4219

更多 Biovision 商品資訊



Protein Extraction



Assay Kits



Molecular Biology



昶安科技

Excel Biomedical

www.exbio.com.tw

0800-0123-10

service@exbio.com.tw